

# How to Print on Labels.

---

©2010 Copyright by Lars Sams

Please note that Barcode Image Maker Pro includes a 750+ pages manual and that additional information can be found in the manual. You will need Adobe Reader 7 or better to be able to view the manual.

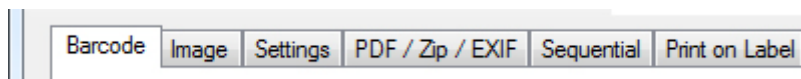
Some sample files have been included in the setup file and they are located at Documents\Barcode Image Maker Pro\

The PDF manual is at Start > All Programs > Shareware by Lars Sams > Barcode Image Maker Pro

## Let's get started.

Run Barcode Image Maker Pro

Make sure you have selected the Barcode TAB. (Please look at the Picture below)

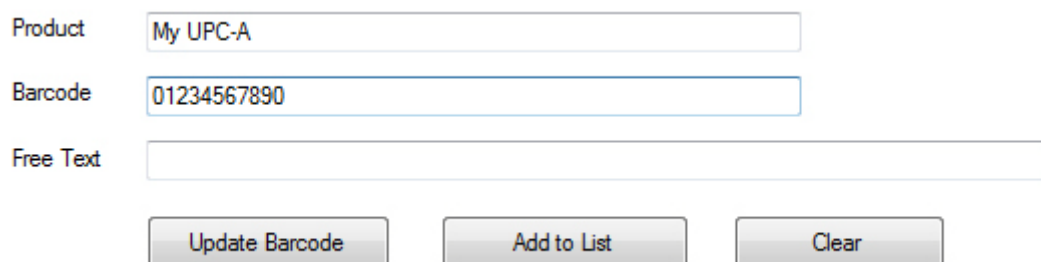


## Add a UPC-A

Select the UPC-A barcode in the Select Barcode area. (Please look at the Picture below)

A screenshot of a dropdown menu labeled 'Select Barcode'. The menu is open, and 'UPC-A' is selected and displayed in the dropdown box. A small downward-pointing arrow is visible on the right side of the dropdown box.

Fill in the information for the barcode. The UPC-A needs 11 digits, the last digit (12<sup>th</sup> digit) is the checksum and will be added automatically. All but the Barcode is optional. (Please look at the picture below)

A screenshot of the barcode input form. It contains three text input fields: 'Product' with the text 'My UPC-A', 'Barcode' with the text '01234567890', and 'Free Text' which is empty. Below the fields are three buttons: 'Update Barcode', 'Add to List', and 'Clear'.

The Barcode is shown in the Barcode Area. (Please look at the Picture below)







Label Measurements

Label Width:  mm

Label Height:  mm

Horizontal Pitch:  mm

Vertical Pitch:  mm

Adjust Barcode Placement

Left/Right:  mm

Up/Down:  mm


Preview / Print


Labels to Print of each item:  ←

Page(s) to print of each item:

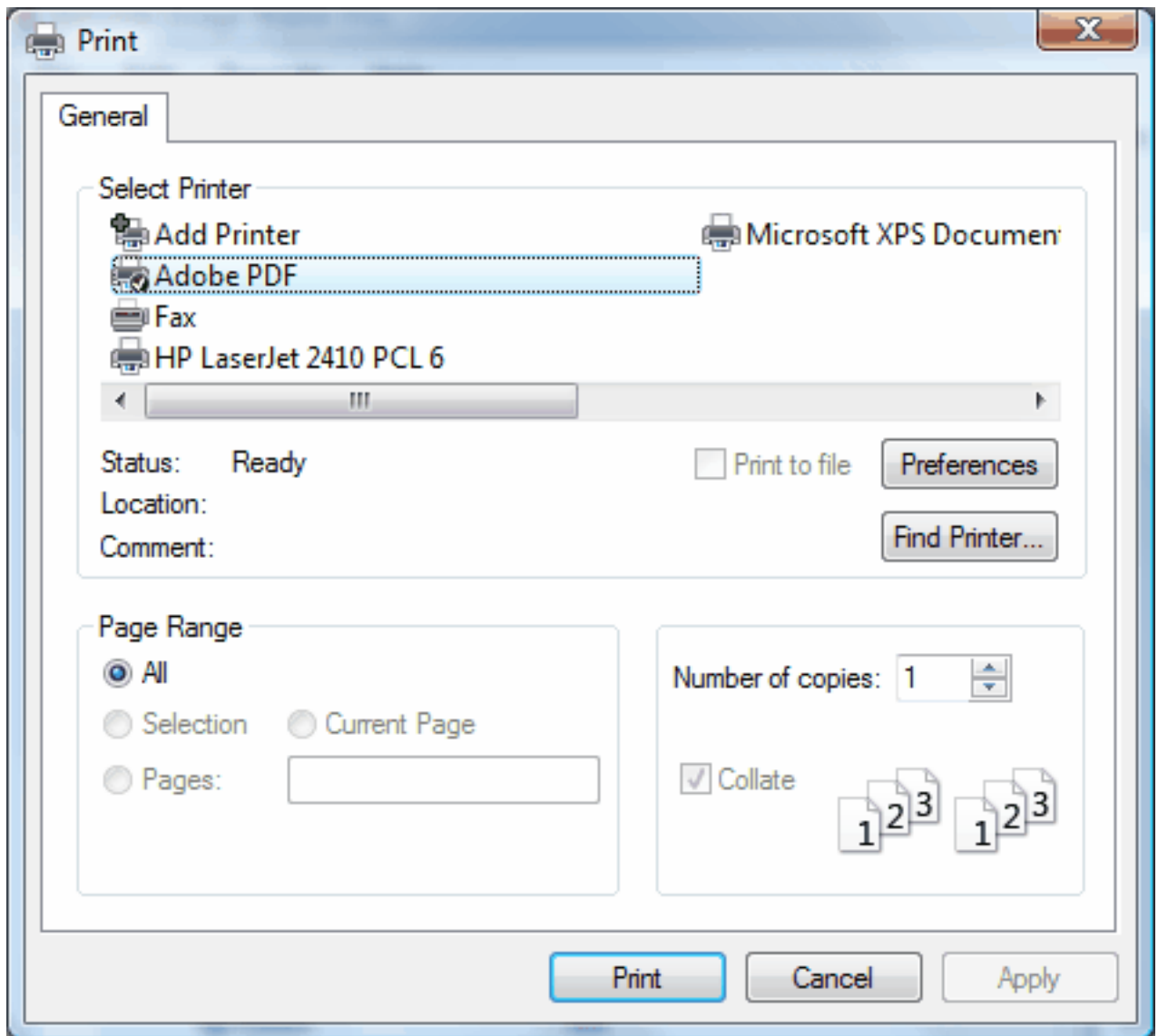
Outline Labels ←

Check to see if Barcode fits label. ←

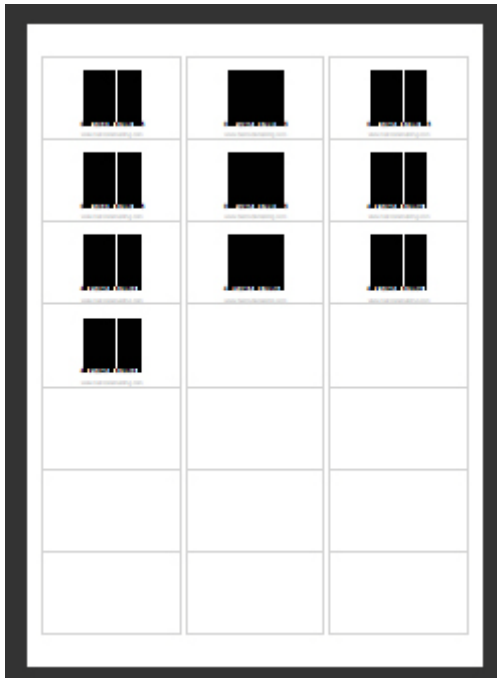
 Use the Preview icon in the tool bar or click on the Review button to preview the barcodes on the labels.

 Use the Print icon in the tool bar or click on the Print button. I will click on the Print icon

The Print dialog window will show. Select the printer you would like to use by clicking on it, when ready click on the Print button. In this case I use Adobe PDF. (Please look at the Picture below)



This is how the label sheet looks at 25% magnification in Adobe. (Please look at the Picture below)



This is how one label looks. (Please look at the Picture below)



## Contact

Now you know how to print barcodes on labels. If you have any questions, please e-mail [info@barcodemaking.com](mailto:info@barcodemaking.com)

The homepage is at [www.barcodemaking.com](http://www.barcodemaking.com)

## Get Barcode Image Maker Pro.

Barcode Image Maker Pro is only USD \$68 (as low as USD \$53, depending on the number of copies ordered.)



Barcode Image Maker Pro., **Product ID: 300314279** (Product ID: is valid for ShareIt! only).

Order Page:

<https://secure.shareit.com/shareit/checkout.html?productid=300314279&language=English>



Barcode Image Maker Pro., **Product ID: 82517** (Product ID: is valid for RegSoft.com Inc only)

Order Page: <https://www.regsoft.net/purchase.php3?productid=82517>