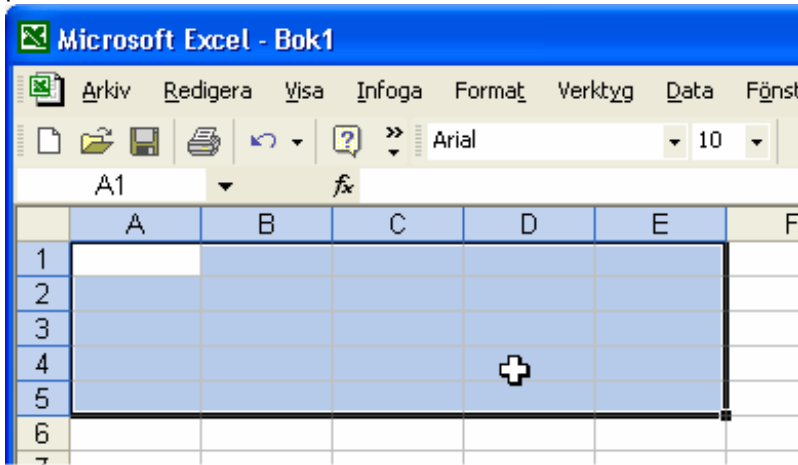


## **HOW TO CONVERT A \*.XLS TO A \*.BK2 FILE.**

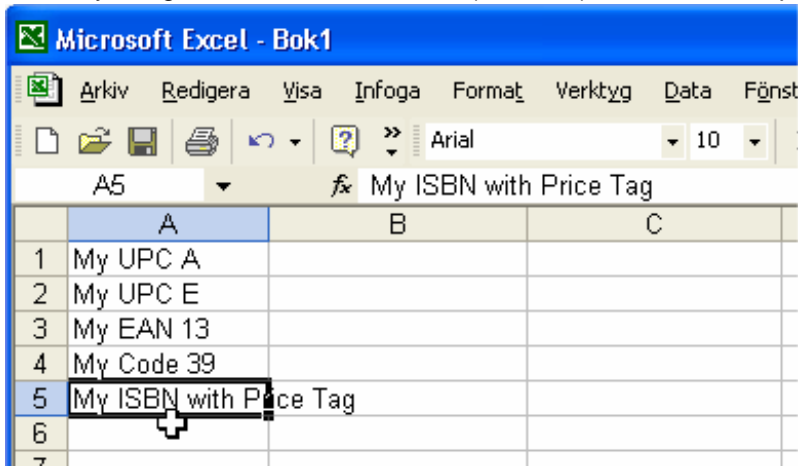
©2002 Copyright by Lars Sams

Run MS Excel.

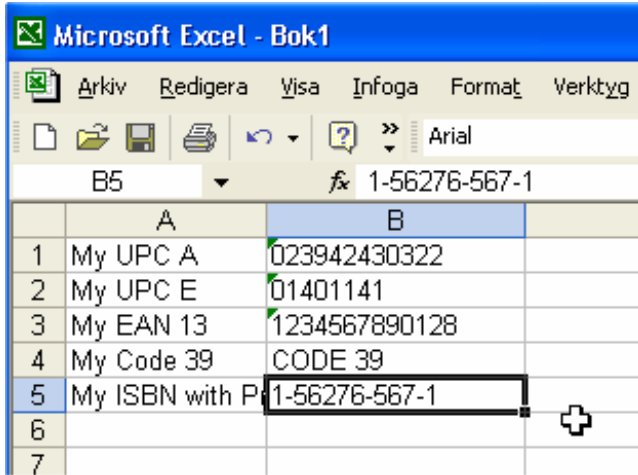
To make a \*.bk2 we will need 5 cells wide and in this case 5 cells high and you will have to format all cells as TEXT or you will get an error when loading it into Batch Barcode Maker. Please look at picture below.



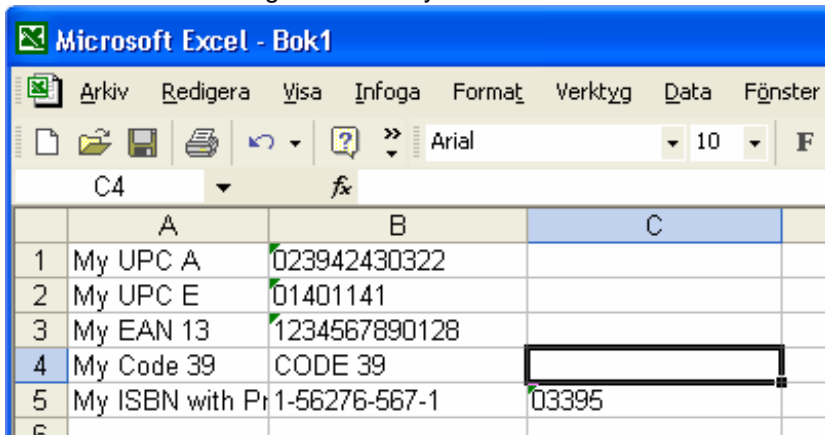
I start by filling in the Product in Row A (A1 to A5). Please look at picture below.



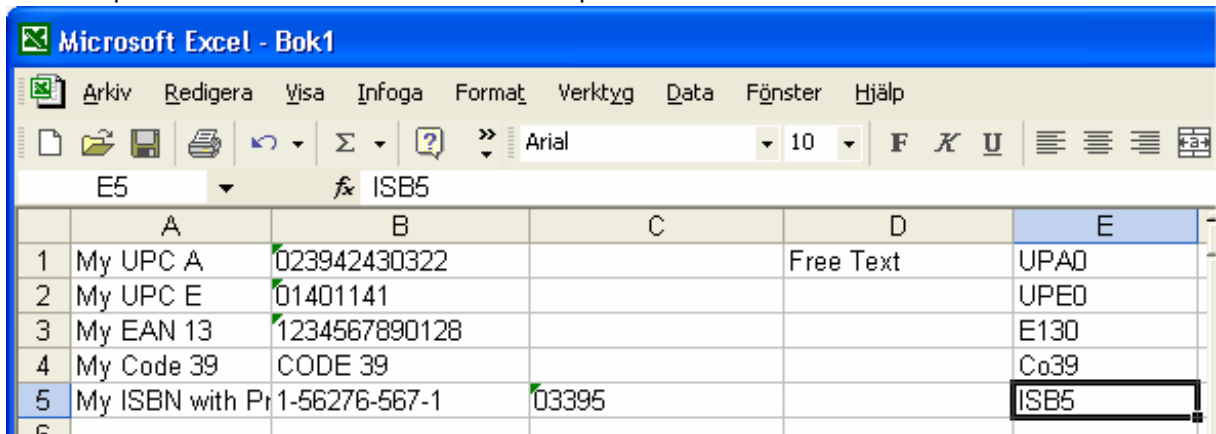
Then I fill in the barcode characters for the product in Row B (B1 to B5), if you didn't format the cells as TEXT then you will get something like 2.39+8 and you will not be able to use it in Batch Barcode Maker, so it's very important that all cells is formatted as TEXT. Please look at picture below.



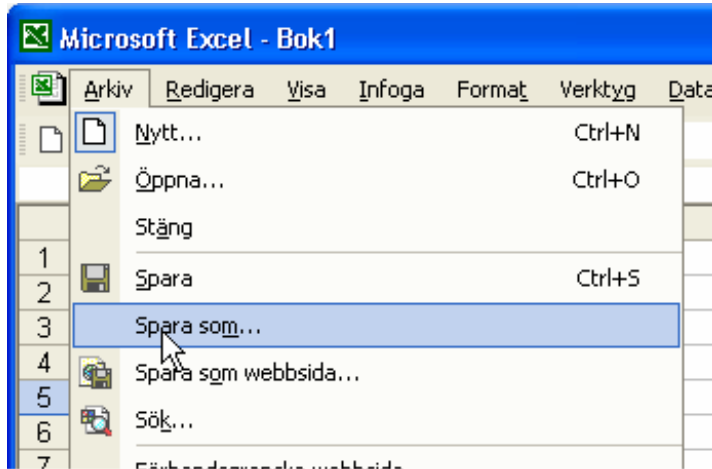
Row C (C1 to C5) contains the Digit Supplement and as we only use 5 Digit supplement for the ISBN with the Price tag then we only fill in the information in C5. Please look at picture below.



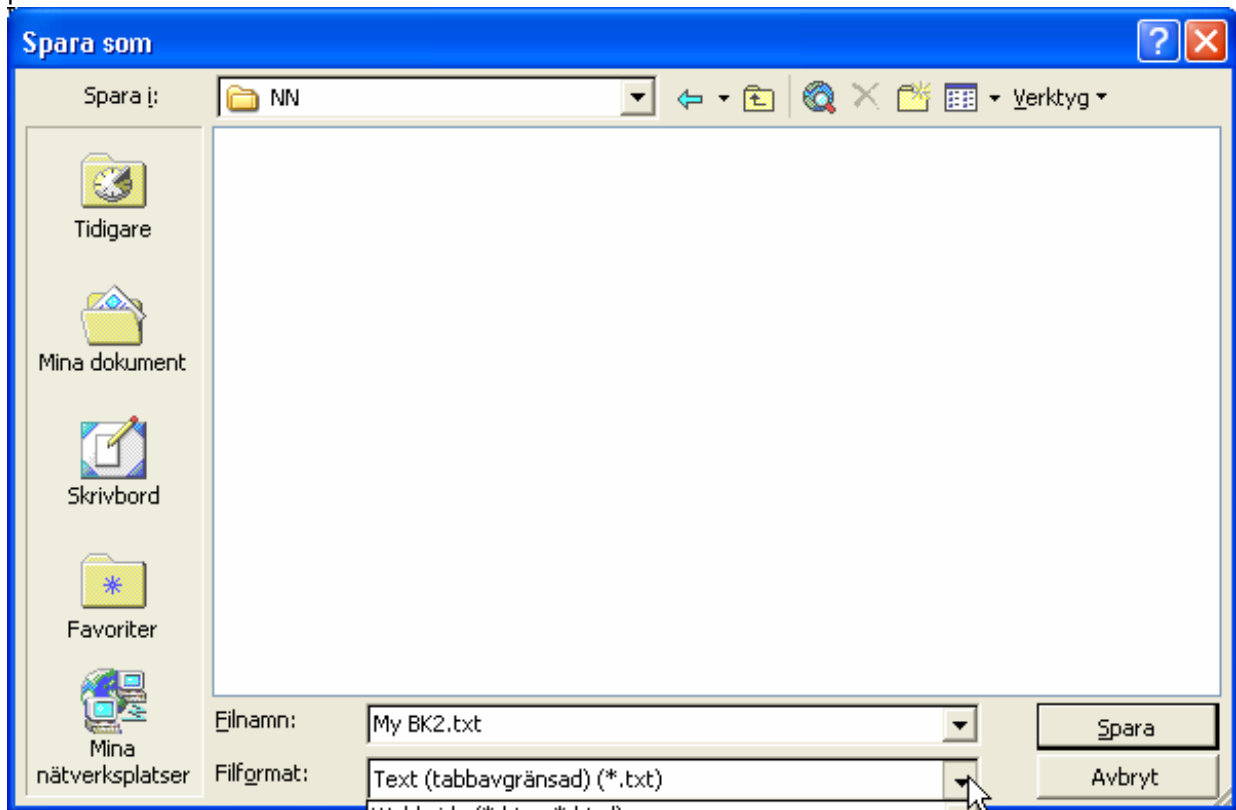
Row D is for Free Text. In Row E (E1 to E5) we fill in the Barcode Type used by Batch Barcode Maker. You must use the Barcode Type as stated or your converted file isn't going to work. e.g. UPC A is UPA0 (Zero). More information about the Barcode Type is available in your help file and in the help file in Barcode XL. Please look at the picture below.



Now it's time to save the file, Click in File and then Save as... (The picture is from the Swedish version of MS Excel)

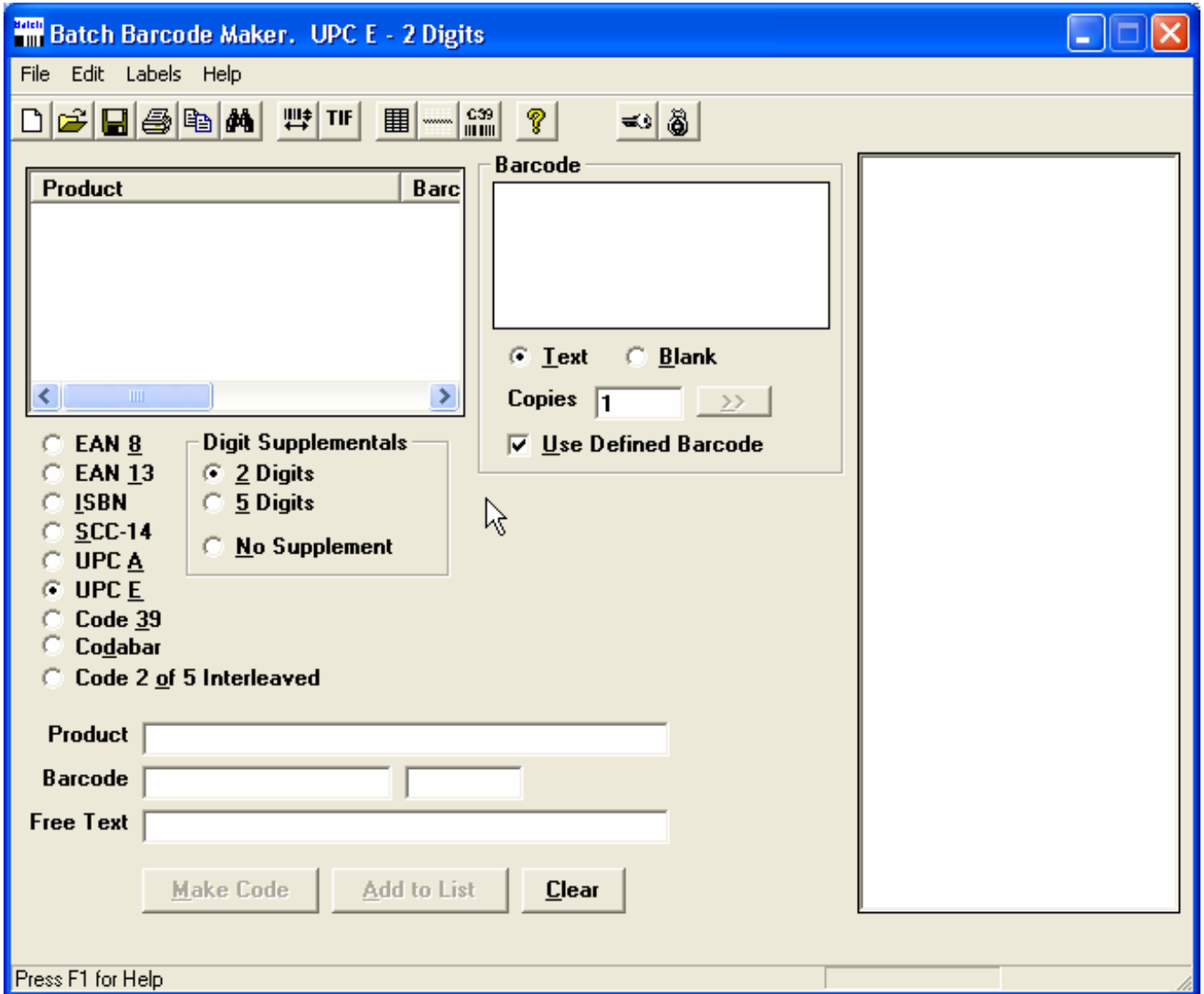


I choose the file format "Text (Tab delimited)(\*.txt)" and save the file as "My BK2.txt", Please look at picture below.

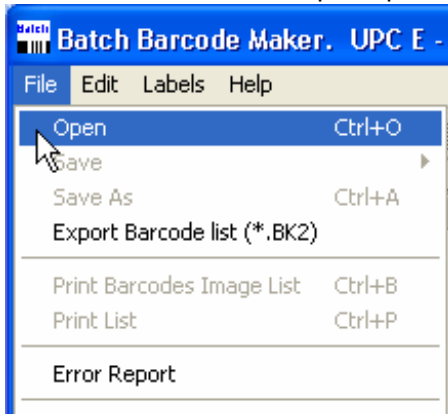


Now we have made a TAB Delimited Text File and all we have to do is load it into Batch Barcode Maker.

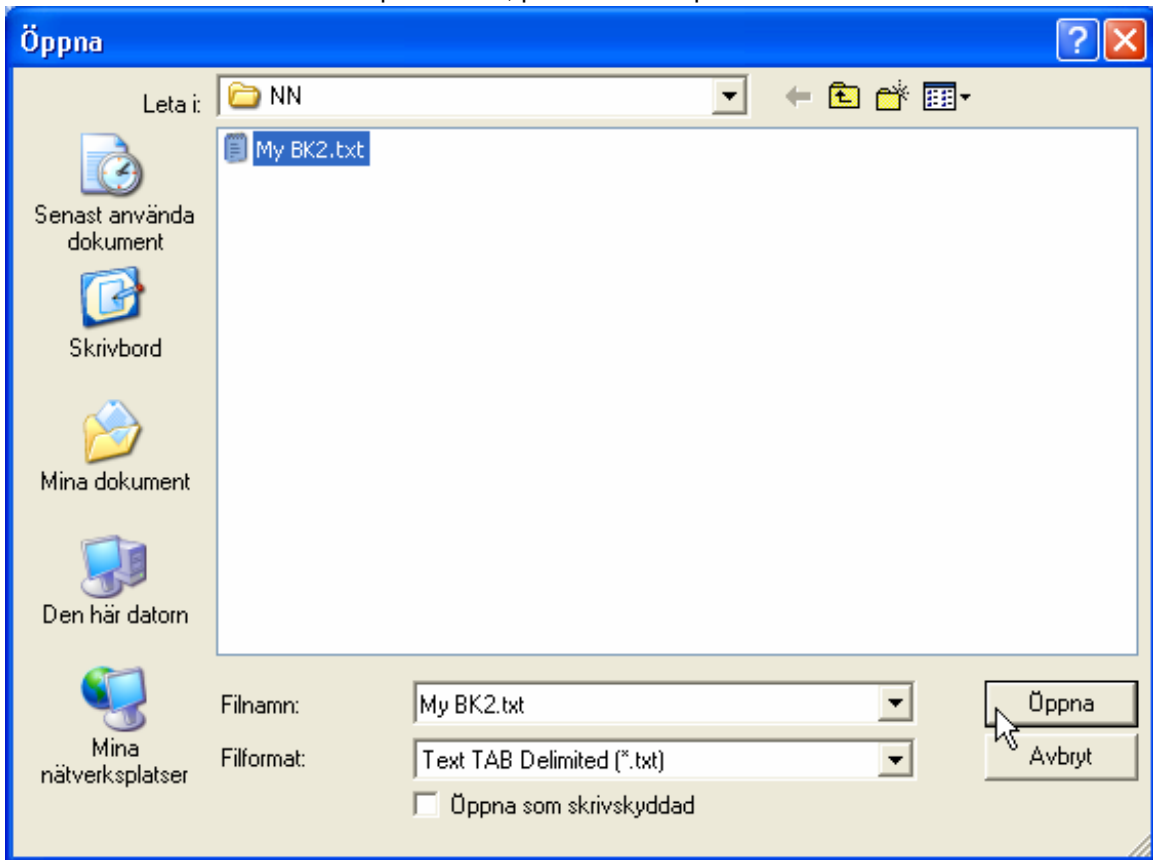
Run Batch Barcode Maker



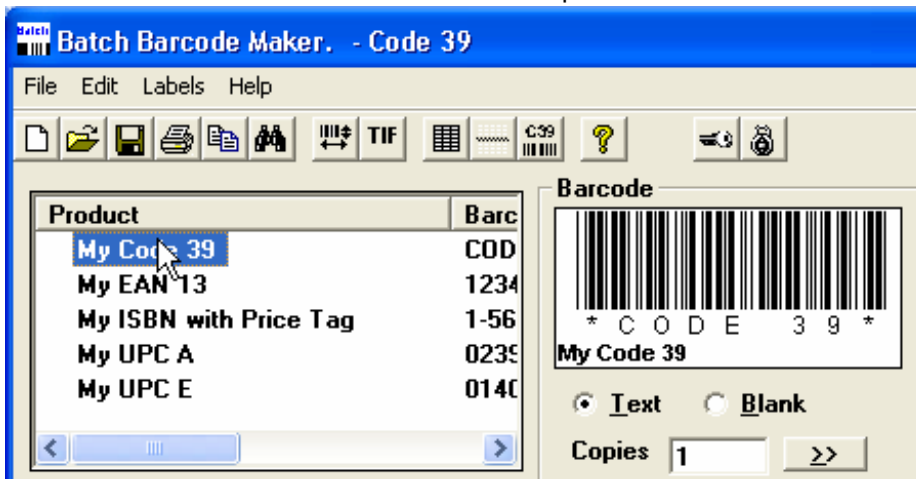
Click on "File" and then "Open", please look at picture below.



Select "Text TAB Delimited (\*.txt)" as file format and then click on the file we made in MS Excel "My BK2.txt" and then click on the Open button, please look at picture below.



Now the file "My BK2.txt" have been loaded and I click on "My Code 39" and now the barcode shows in Batch Barcode Maker. Please look at picture below.



This all you have to do to make a \*.xls file work as a \*.bk2 file, you must follow this standard or your \*.bk2 file isn't going to work. The easy way to do this work is to use Barcode XL. Please note you will need Barcode XL 97 for MS Excel 97, Barcode XL 2000 for MS Excel 2000, Barcode XL 2002 for MS Excel 2002.

Barcode XL includes Barcode XL 97, Barcode XL 2000, Barcode XL 2002, but they must be registered at RegSoft.com Inc

**To order Barcode XL 97** (Product ID: 42227)at RegSoft at

SECURE LINK: <http://www.regsoft.net/purchase.php3?productid=42227>

NON-SECURE LINK: [http://www.regsoft.net/purchase\\_nonsecure.php3?productid=42227](http://www.regsoft.net/purchase_nonsecure.php3?productid=42227)

**To order Barcode XL 2000** (Product ID:42228)at RegSoft at

SECURE LINK: <http://www.regsoft.net/purchase.php3?productid=42228>

NON-SECURE LINK: [http://www.regsoft.net/purchase\\_nonsecure.php3?productid=42228](http://www.regsoft.net/purchase_nonsecure.php3?productid=42228)

**To order Barcode XL 2002** (Product ID:42229)at RegSoft at

SECURE LINK: <http://www.regsoft.net/purchase.php3?productid=42229>

NON-SECURE LINK: [http://www.regsoft.net/purchase\\_nonsecure.php3?productid=42229](http://www.regsoft.net/purchase_nonsecure.php3?productid=42229)

I hope that the above information will be of help to you, if not, please e-mail.

Best wishes

Lars Sams

[help.bar-code@telia.com](mailto:help.bar-code@telia.com)

<http://hem.passagen.se/sams/index.htm>